



RETFORD
CIRCULAR ECONOMY PROJECT

Introducing the project

The Retford Circular Economy Project (RCEP) is a new project which aims to extract and reuse historic pulverised fuel ash (PFA) waste from a former landfill site situated near to the village of Lound and approximately 1 mile (1.5 kilometres) north of Retford. RCEP would extract around 300,000 tonnes of PFA waste a year, providing a vital tool to decarbonise our building products industry at a time when ‘fresh’ supply from existing power stations is ending.

When used in cement production, PFA is a vital tool in reducing the carbon intensity of building products, saving close to 1kg of carbon dioxide (CO₂) for every tonne used. However, the supply is currently in a state of change, as the UK now only has three coal-fired power stations in operation, with all of them set to close by 2025. The availability of domestically produced fresh PFA would then end.

The lack of readily available fresh PFA from these power stations is having a significant impact on the UK building industry, which would need to either import PFA from abroad or use more carbon intensive materials.

RCEP offers a solution, by securing a continued source of PFA for the UK supply chain – extracting up to 6.7 million tonnes of material to be used as a sustainable building product. This would help to the UK Government to achieve its climate targets, whilst protecting parts of the economy reliant on sustainable building products.

This briefing pack has been produced to introduce you to the project, Hive Aggregates and our pre-application consultation programme.

What is a ‘Circular Economy’?

A Circular Economy is a system that looks to tackle global challenges like climate change, biodiversity loss, waste and pollution. A Circular Economy aims to keep products, materials, equipment and infrastructure in use for longer, therefore minimising the creation of waste, pollution and carbon emissions.

Introducing Hive Aggregates

Proposals for RCEP are being brought forwards by Hive Aggregates, a new part of Hive Energy Group, which is focussed on addressing decarbonisation and sustainability challenges in the building products industry.

The global building products industry is resource and carbon-intensive. It is estimated that if the cement industry alone were a country, it would be the third-largest carbon emitter in the world, behind only China and the US.

At Hive Aggregates, we believe that part of the solution is to use industrial by-products and waste to create sustainable building products that reduce the need for carbon-intensive practices, such as the production of traditional cement.

Our current focus is on recycling waste PFA to create a sustainable cement substitute.

If built, RCEP would:



Save up to 5.3 million tonnes of carbon, more than all the CO₂ produced by cars in Scotland and Wales each year.



Improve local biodiversity through new habitat provision.



Help the UK to achieve its legally binding net-zero climate targets.



Reduce the need for carbon-intensive practices and reduce our reliance on natural resources.



Create around 20 new full-time jobs, as well as providing opportunities for the local supply chain.

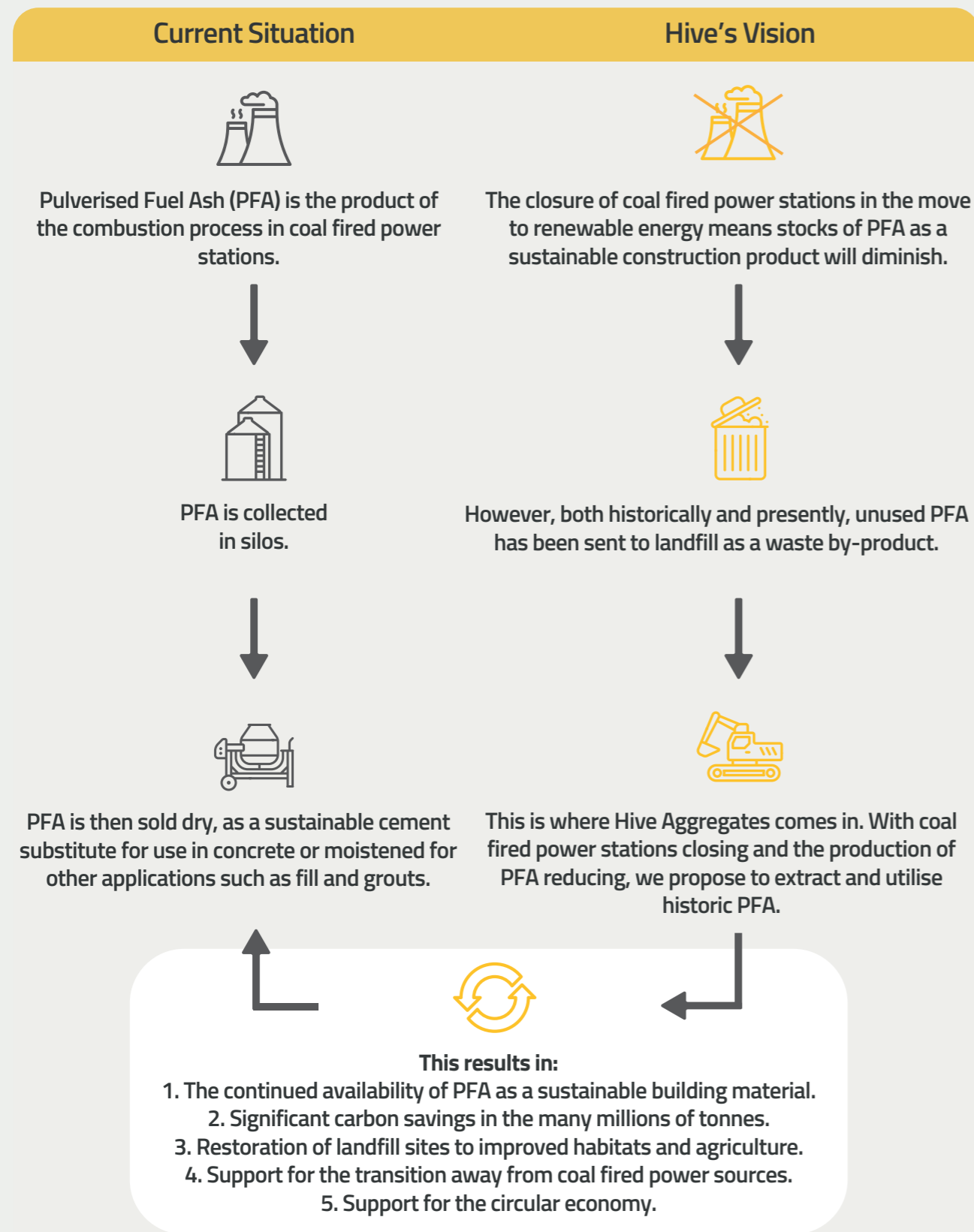


Secure a continued supply of PFA for the UK’s construction industry, reducing the reliance on imports from abroad.

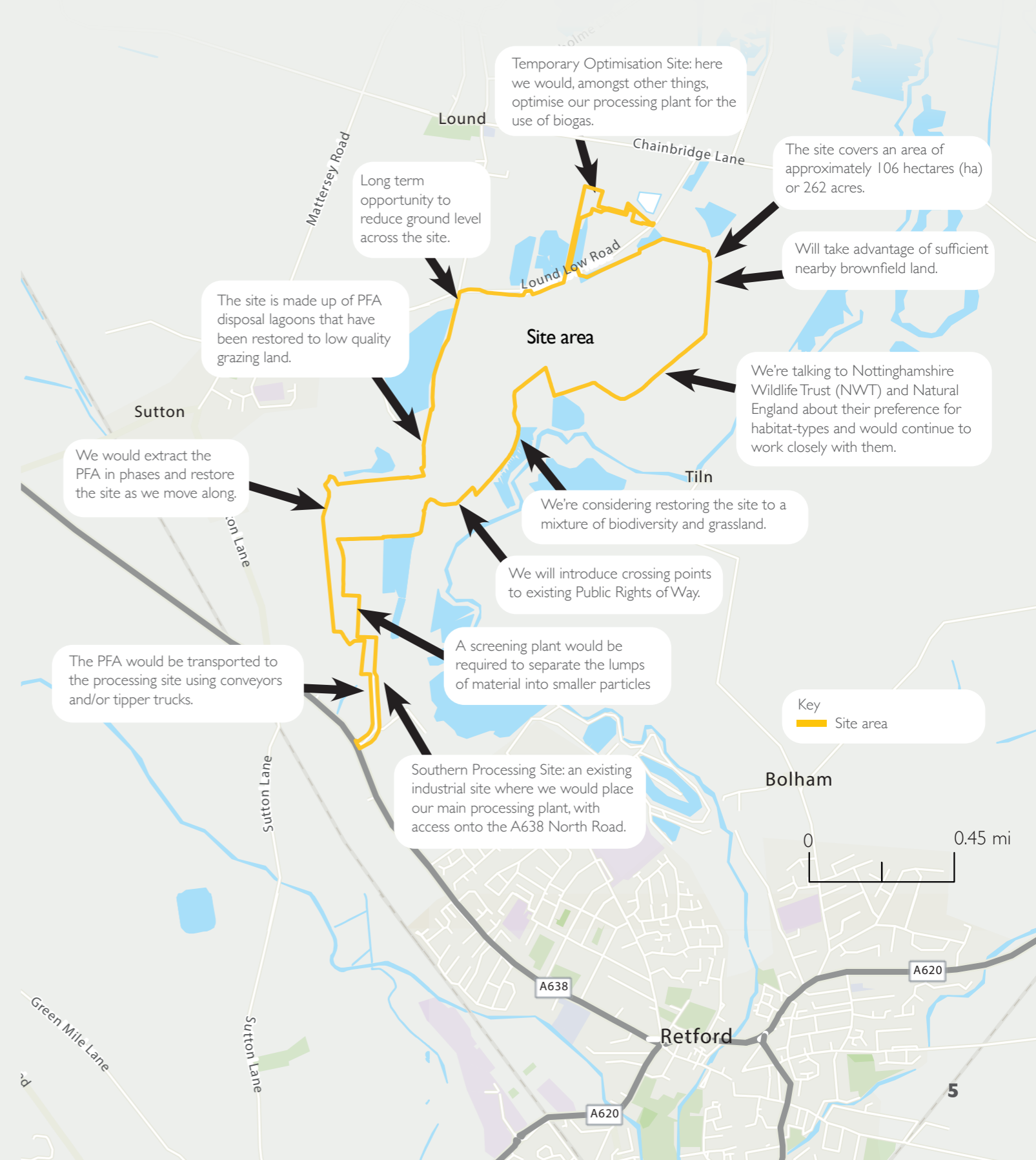


Supporting innovative technologies based in the UK

How sustainable PFA works



Retford Circular Economy Project Site Area



The development process

The planning process

Hive Aggregates is proposing to submit a full planning application for RCEP to Nottinghamshire County Council, which is the planning authority for the proposal.

The Environmental Impact Assessment (EIA) process

RCEP has been classified as a project that requires an Environmental Impact Assessment (EIA). This process ensures that a wide range of environmental subjects will be taken into consideration including traffic impacts, landscape and visual impacts and ecology. Content from these assessments will be made available on the project website.



Ecology

We are aware of the nature reserves in close proximity, and have been undertaking ecological surveys and talking to Notts Wildlife Trust since earlier this year. We will be carrying out a comprehensive investigation of the ecological and biological features of the site and the surrounding areas. The design of the facilities will include measures to enhance local biodiversity.



Noise

As part of the EIA we will also undertake a noise assessment. Initially measuring the level of noise currently at the proposed site and comparing this to the modelling of noise when in operation. If required, mitigation measures will be provided to ensure compliance with noise limits.



Transport

We will also undertake a detailed Transport Assessment as it is proposed that the material would be exported by HGV. An assessment will be carried out on the anticipated effect on roads during the peak period, and any requirement for mitigation measures will be identified.



Air Quality

We will undertake an Air Quality Assessment which would also consider the potential impacts arising from increased traffic flow as a result of the development on existing residential receptors.



Visual

As part of the planning process, we will be undertaking a Landscape and Visual Impact Assessment (LVIA) that will be explained in accordance with a methodology compliant with the Landscape Institute and Institute of Environmental Management and Assessment Guidelines.

Our community consultation

Pre-application consultation

Before deciding whether to submit the planning application, we will be talking to the local community to understand their views and considering this as we refine our project for our planning application.

We will be holding a pre-application community consultation which will run for four weeks, beginning in late September. The exact timings and details of the consultation being extensively advertised in the local area. Our consultation will include:



Consultation Postcard

A consultation postcard will be distributed to local homes and businesses throughout the consultation area.

This will provide details about where to view more information on the proposals and the face-to-face consultation event, as well as guidance on how to provide feedback, ask questions and access further information.



Face-to-face public events

Face-to-face public events will be hosted in the local area for members of the public to view information events, provide feedback on the project and ask questions directly to the project team.



Consultation website

A dedicated website will be launched prior to the start of the consultation. This website would provide information about the proposal and associated consultation activities, as well as provide downloadable electronic versions of all consultation materials. Details for the website can be seen overleaf.



Communication lines

Members of the public will be able to ask questions and submit their comments through a dedicated project email address and freephone telephone information line. Details of these can be seen overleaf.



Community webinars

An online webinar will also be taking place for members of the public who have taken an interest in the project. Attendees will have the opportunity to ask questions directly to the project team. Details of when and how this is taking place will be available on our website and postcard.



Contact us

There is a community relations team for Retford Circular Economy Project which is available to answer any questions. Please see the dedicated contact details below.

Website – www.retfordcep.co.uk

Freephone info line – 0808 169 5659

Email – info@retfordcep.co.uk

Post – FREEPOST RCEP